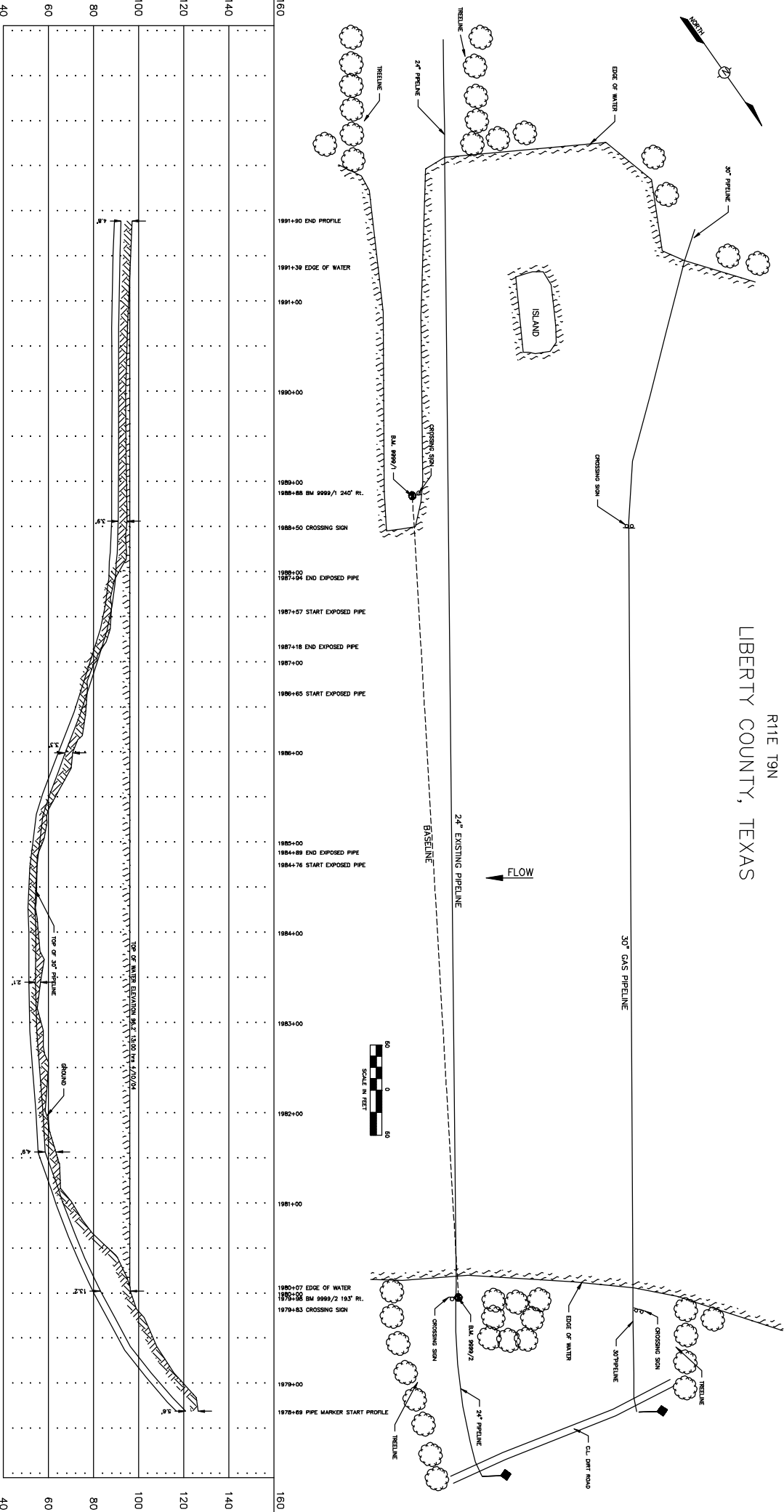


TRINITY RIVER  
 R11E T9N  
 LIBERTY COUNTY, TEXAS



NOTES: REFER TO TEXAS STATE PLANE COORDINATE SYSTEM TMS-27 CONTROL AND 1984 DATUM.

BLM 9999/1 - SET ALUMINUM DISK IN CONCRETE - 1 FT. IN FRONT OF THE EAST LEG OF THE CROSSING SIGN ON THE SOUTH BANK FURNISHED ON THE N. 44°17'12" E. 3171.87/1 EL. 100.0 ASSUMED

BLM 9999/2 - SET ALUMINUM DISK IN CONCRETE - 1 FT. BEHIND THE WEST LEG OF THE CROSSING SIGN ON THE NORTH BANK OF THE 24" PIPELINE STATION 1979+48 193' RL.

WATER ELEVATION CALCULATED FROM TEST LEADS ON EAST BANK 1979+11

TOP OF WATER ELEVATION 86.2' (86.0) Hrs 4/17/02

LEGEND

- SINGLE POLE SIGN
- DOUBLE POLE SIGN
- △ PIPE LINE P.I.
- VALVE
- PIPE LINE NUMBER
- TEST LEAD
- HORIZONTAL AND VERTICAL CONTROL

REVISION

NO.	DATE	BY	REVISION

REFERENCE

NO.	DATE	BY	REFERENCE

STARTRAK PIGGING, INC. - KATY, TEXAS

SHEET NO. 100-000-1111  
 SHEET 6 OF 6  
 9999  
 ABC PIPELINE CO.  
 PLAN & PROFILE OF  
 30" GAS PIPELINE CROSSING  
 THE TRINITY RIVER  
 LIBERTY COUNTY, TEXAS  
 SHEET NUMBER 9999  
 1" = 50'  
 TEXAS 1 of 1